

May 28, 2019

Commemorating the 30th Anniversary of Yokohama Museum of Art,
the 150th Anniversary of the Collector's Birth and the 80th Anniversary of His Death

The Eye of a Connoisseur: The Legendary Hara Sankei Collection

Venue: Yokohama Museum of Art

Dates: July 13 (Sat.)- September 1 (Sun.), 2019



Hara Sankei (real given name: Tomitaro; 1868-1939) was a Yokohama-based businessman, who primarily made his fortune in the raw-silk trade and silk-spinning industry. Born in the first year of the Meiji Period (1868-1912), Hara was a leading figure in the nascent economic sphere of modern Japan until just prior to World War II.

Hara was also an enthusiastic collector of antique art with a unique historical perspective; a man of refined tastes who broke new ground in Japanese *chanoyu* (the Way of Tea); an artist who moved and reconstructed historical buildings, created Sankeien Garden, which he opened to the public free of charge, and a talented painter, calligrapher, and classical Chinese scholar; and a patron who actively supported and cultivated promising artists of the era. While Hara's cultural endeavors were based on his altruistic spirit as a philanthropist, and his activities and interpersonal exchanges as a business leader, his activities concurred with the process and trajectory that led to the establishment of the modern Japanese art world and market.

In this exhibition, we focus on Hara's achievements in his four different roles as collector, tea master, artist, and patron. While examining the interrelationship between these areas from a historical perspective, we present approximately 150 art works and tea utensils from Hara's collection, including over 30 masterpieces that have been designated as National Treasures and Important Cultural Properties, along with important documents to provide a complete picture of the man. This will serve as an invaluable opportunity to see Hara's unrivaled collection of fine articles all at once in the largest exhibition of its kind to date.

[National Treasure]

Kujaku Myoo (Mahamayuri), 12th century
Color on silk, hanging scroll, 147.9 x 98.9cm
Collection of the Tokyo National Museum
Image: TNM Image Archives
Exhibition period: July 13-August 7, 2019





[National Treasure] *Picture Scroll of the Tale of Nezame* (detail), 12th century
Color on paper, scroll, 26.0 x 533.0cm
Collection of the Museum Yamato Bunkakan
Exhibition period: August 9-September 1, 2019



Portrait of HARA Sankei
Courtesy of Sankeien Garden



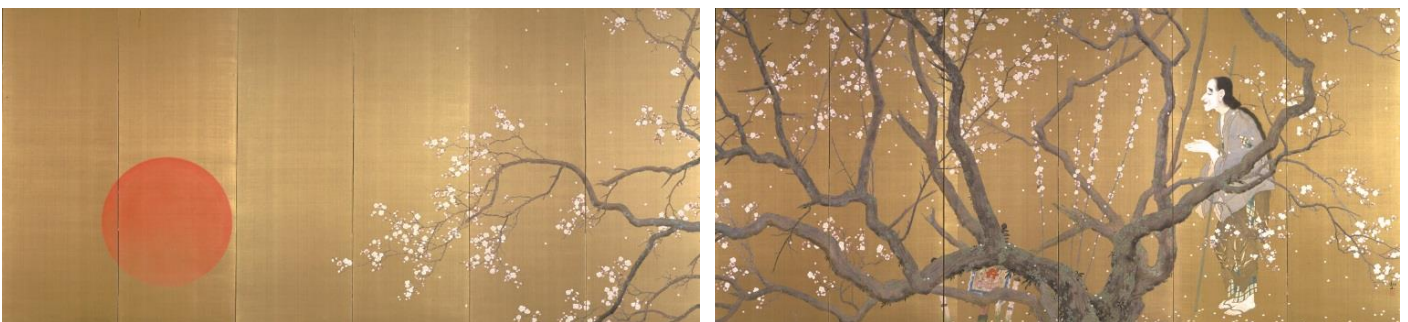
HARA Sankei, *White Lotus*, 1931
Color on silk, hanging scroll, 128.0 x 41.6cm



Shino-style Tea Bowl known as Umegaka
(Scent of Plum Blossoms)
Late 16th to early 17th century
Ceramic, 8.3cm (height) x 13.5cm (mouth diameter) x 3.8cm (base diameter)
Collection of the Gotoh Museum
Photo by Meikyo Katsuo
Exhibition period: July 13-August 7, 2019



[Important Cultural Property]
Attributed to MAO Yi
Hollyhock and Kittens, 12th century,
Color on silk, hanging scroll, 25.3 x 25.8cm
Collection of the Museum Yamato Bunkakan
Exhibition period: July 13-August 7, 2019



[Important Cultural Properties]
SHIMOMURA Kanzan, *Yoroboshi* (Protagonist of the Eponymous Noh Drama), 1915
Color on gold-leafed silk, pair of six-panel folding screens, 186.4 x 406.0cm
Collection of the Tokyo National Museum
Image: TNM Image Archives
Exhibition period: August 9-September 1, 2019

Admission

Adults	¥1,600 (1,400 / 1,500)
University and high school students	¥1,200 (1,000 / 1,100)
Junior high school students	¥ 600 (400 / 500)
Children under 12	Free
Seniors (65 and older)	¥1,500 *ID required. Only available at ticket counter in the museum.

*(/) = Advance / Group of 20 or more.

*For a group of 20 or more, reservation is required in advance.

*Advance tickets are available from May 13 (Mon.) until July 12 (Fri.), 2019 at the Museum Shop, Official website and the other Ticket Agencies.

*Free admission for high school students and younger with valid IDs on Saturdays.

*Visitors with disability and one person accompanying them are admitted free of charge.
(Please present certificate at the entrance.)

*The ticket also gives admission to the Exhibition of the Museum Collection for the same day.

General Information

Title: Commemorating the 30th Anniversary of the Yokohama Museum of Art,
the 150th Anniversary of the Collector's Birth and the 80th Anniversary of His Death
The Eye of a Connoisseur: The Legendary Hara Sankei Collection

Dates: July 13 (Sat.) - September 1 (Sun.), 2019

Open hours: 10:00-18:00
*Open until 20:00 Fridays and Saturdays
*Admission until 30 minutes before closing.

Closed: Thursdays

Venue: Yokohama Museum of Art
3-4-1, Minatomirai, Nishi-ku, Yokohama 220-0012
TEL: +81(0)45 221 0300 FAX: +81(0)45 221 0317
URL: <https://yokohama.art.museum/eng>

Organized by: Yokohama Museum of Art [Yokohama Arts Foundation], Nikkei Inc.

Special cooperation by: Sankeien Hoshoukai Foundation, The Museum Yamato Bunkakan,
Society of Hara Sankei Studies

In Cooperation with: Aioi Nissay Dowa Insurance Co., Ltd., Minatomirai Line,
Yokohama Cable Vision Inc., Yokohama FM Broadcasting Co., Ltd.,
Metropolitan Expressway Co., Ltd.

Contact

Fujii(Ms.), Yamamoto(Ms.), Isshiki(Ms.), Umezawa(Ms.)
Public Relations, Yokohama Museum of Art
3-4-1, Minatomirai, Nishi-ku, Yokohama. 220-0012 JAPAN
TEL: +81(0)45 221 0319 FAX: +81(0)45 221 0317 **E-mail: pr-yma@yaf.or.jp**